

Company Profile



TECHNE & PARTNER designs Architecture & Engineering in accordance with the best italian tradition, well known and appreciated all over the world.

Starting from the client requirements we create projects giving the best attention to style, context, landscape, details, materials, finishings, environment specificity and wonder of the italian way of design.

World Infrastructure Award 2013
Well Tech Smart City Award 2013
The 8 "Best of The Best" Life Environment Projects 2014
Green Good Design Award 2014



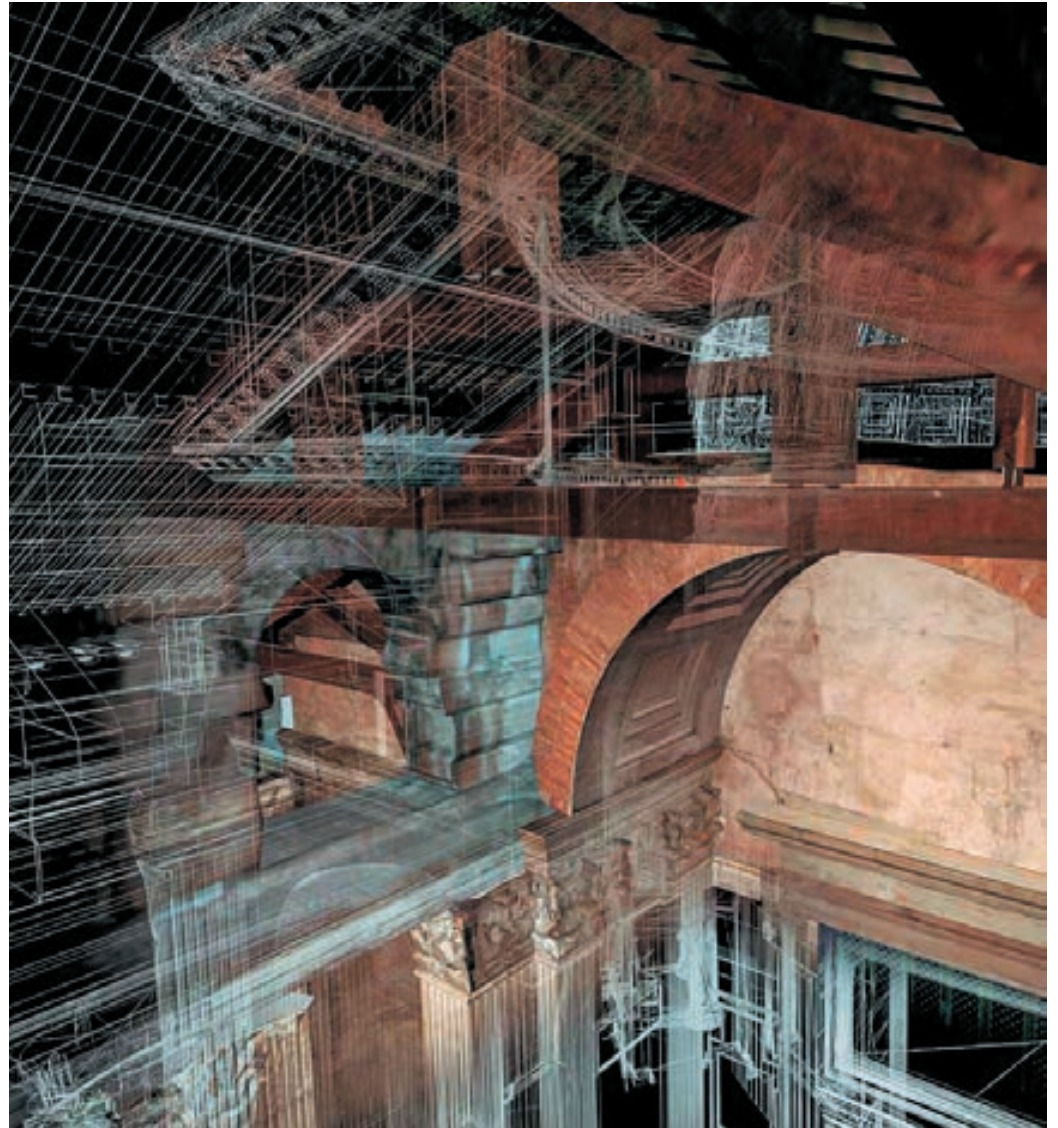
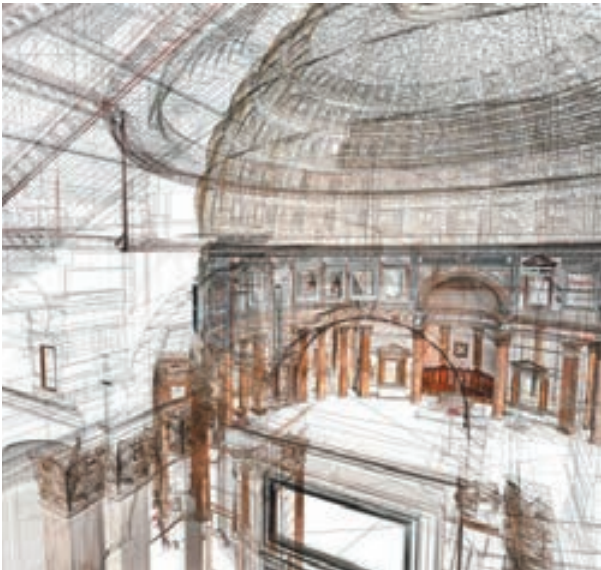
TECHNE & PARTNER is an Italian company that provides services in architecture and engineering in Italy and around the world. We have brought together 50 professionals with great experience (architects, engineers, surveyors, consultants) with the aim of offering a complete architectural and engineering service, urban planning and integrated development programs, without dimensional limitation, under the oversee of a single firm. Any company has a proven relevant track, built up during many years of activity, from the concept design's stage to the closing phase as well as to the turnkey.

We have three main divisions: Architecture, Engineering, and Cross Functional. Each division is subdivided into several departments, able to progress projects within different fields. All departments are led by professionals who have a proven track records of at least 15 years.



From the earliest stages of the project **TECHNE & PARTNER** starts and manages a process of comparison and compilation of ideas by combining contributions from each of its design departments who work together to provide the client with a complete and unique layout.

For the restoration, conservation and enhancement of architectural and cultural heritage we provide our customers with our experience in the architectural, structural and technological fields.



**HOTEL
RETAIL & OFFICE**

- 10 **Hotel Grotta di Tiberio** / Sperlonga
- 11 **Hotel Ganimede** / Sperlonga
- 12 **Hotel Moresco** / Sperlonga
- 13 **Hotel Oasi di Kufra** / Sabaudia
- 14 **Daniel Wellington** / Venezia
- 15 **Chopard Jewelry** / Jeddah
- 16 **Pasticceria Mignon** / Milano - Torino
- 17 **VYTA** / Milano
- 18 **Fashion Shop** / Rome
- 19 **Pierluigi's Restaurant** / Rome
- 20 **Grotta dei Delfini Beach** / Sperlonga
- 21 **Fashion Shop** / Rome
- 22 **Dealership Mercedes - Benz** / Rome
- 23 **Ikea Anagnina** / Rome
- 24 **Tor Tre Teste Retail** / Rome

**RESIDENTIAL**

- 26 **Social Housing** / Sperlonga
- 27 **Private Villa** / Porto Rafael
- 28 **Jardins Braço De Prata** / Lisbon
- 29 **Costa Smeralda SUB-B3** / Palau
- 30 **Alfiere EUR** / Rome
- 31 **Building H26 Novoli** / Florence
- 32 **Private Villa** / Porto Rafael
- 33 **Cecchignola Residential** / Rome
- 34 **Giustiniano Imperatore Residential** / Rome
- 35 **Santa Palomba Housing** / Rome



PUBLIC BUILDING RESTORATION

- 37 **The Pantheon and its clone** / Roma
- 41 **Globe Theatre** / Rome
- 42 **Auditorium S.M. Assunta** / Sperlonga
- 43 **Tower Truglia** / Sperlonga
- 44 **Museum San Domenico** / Fondi
- 45 **S. Erasmo e Marciano Cathedral** / Gaeta
- 46 **Archibishop's Palace** / Gaeta
- 47 **Goldoni Theatre** / Livorno
- 48 **Theatre Solis** / Montevideo
- 49 **Cerbaia Castle** / Cantagallo
- 50 **Reliefs of Monumental Archaeological**



SPECIAL ARCHITECTURE

- 52 **Trade Show Padiglione B** / Genoa
- 53 **City life Torre C** / Milan
- 54 **ENI new headquarter** / Milan
- 55 **MACRO Modern Art Gallery** / Rome
- 56 **Municipal Stadium** / Borgo Vecchio
- 57 **Kaplasky Unconventional Skyscrapres**



INFRASTRUCTURE & MARINE

- 59 **Ex factory Rossi Sud** / Latina
- 60 **Solar Wind Project** / Reggio-Calabria
- 61 **Multilevel Parking & Belvedere San Leone** / Sperlonga
- 62 **Marina la Bellana** / Leghorn
- 63 **Marina** / Sperlonga
- 64 **The Ring Road** / Unaizha

URBAN PLAN & LANDSCAPING

- 66 **Cecchignola Urban Plan** / Rome
- 67 **Compound mobility plan** / Monte San Biagio - Fondi - Sperlonga
- 68 **Integrated Plan Magliana GRA** / Rome
- 69 **The Challenges of Development of the Central Region** / Unaizah
- 70 **Science City Flaminio Masterplan** / Rome
- 71 **Constantine New Masterplan** / Constantine
- 72 **West Qurna Accomodation camp** / West Qurna
- 73 **Casal Grottoni Compound** / Rome
- 74 **Rewtland + 8 Life** / Latina

Hotel Retail & Office



**Hotel
Grotta di Tiberio**



Sperlonga 2006
Construction Cost: 3'100'000 €
Services Carried Out: Preliminary and
Final Design, Building Site Supervision

Hotel Ganimede



Sperlonga 2007

Construction Cost: 3'660'000 €
Services Carried Out: Preliminary and
Final Design, Building Site Supervision



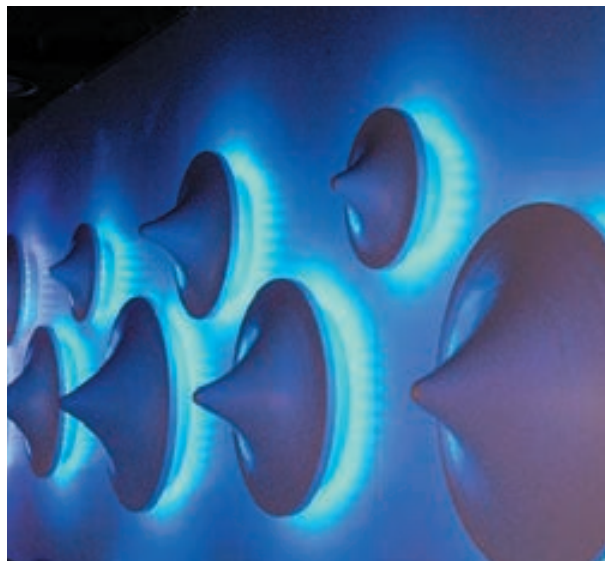
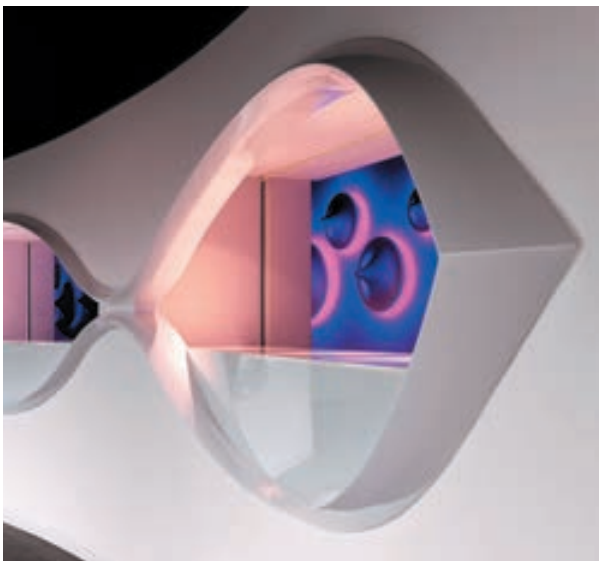
Hotel Moresco



Sperlonga 2009

Construction Cost: 1'130'000 €

Services Carried Out: Preliminary and Final Design,
Building Site Supervision



Hotel Oasi di Kufra

Sabaudia 2013

Services Carried Out: General Contractor
(Final Design, Construction)



Daniel Wellington Wellington



Venezia 2019

Services Carried Out: General Contractor
(Final Design, Construction)

Chopard Jewelry



Jeddah 2015

Services Carried Out: General Contractor
(Final Design, Site Supervision and Construction)

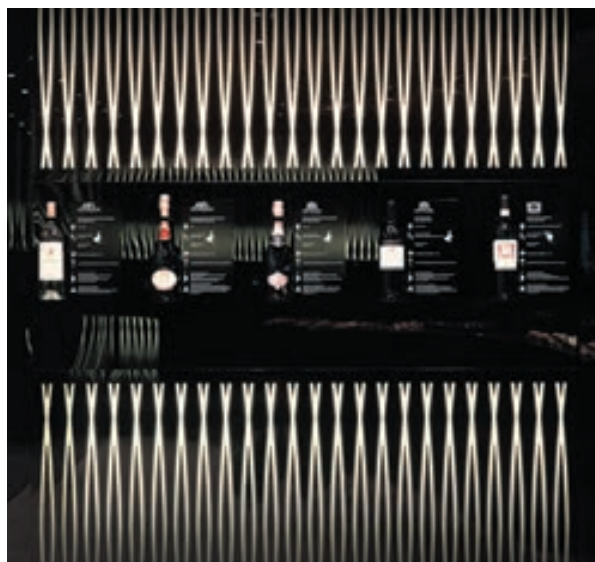


Pasticceria Mignon



Milano - Torino 2017
Services Carried Out: General Contractor
(Final Design, Site Supervision and Construction)

WYTA

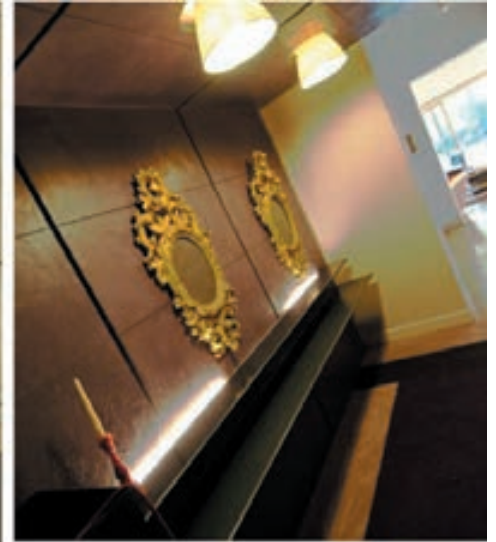


Milano 2013
Services Carried Out: General Contractor
(Final Design, Construction)



Fashion Shop

Rome 2006
Construction Cost: 470'000 €
Services Carried Out: Interior Design
Total Surface: 200 sqm



Pierluigi's Restaurant



Rome 2011
Construction Cost: 450'000 €
Services Carried Out: Interior Design, Consulting on
Materials and Custom Furniture, Lighting Design
Total Surface: 400 sqm



Grotta dei Delfini Beach



Sperlonga 2013

Construction Cost: Confidential
Services Carried Out: Preliminary and
Final Design, Building Site Supervision

Fashion Shop



Rome 2004
Construction Cost: 560'000 €
Services Carried Out: Interior Design
Total Surface: 320 sqm



Dealership Mercedes Benz

Rome 2001

Construction Cost: 350'000 €

Services Carried Out: Interior design, materials consulting, custom furniture and supplies, lighting design, construction supervision

Total Surface: 1'800 sqm



Ikea Anagnina



Rome 2000

Construction Cost: 25'000'000 €
Services Carried Out: Preliminary and Final Design,
Building Site Supervision
Total Surface: 51'189 sqm



Tor Tre Teste Retail



Rome 2004

Services Carried Out: Preliminary and Final Design,
Building Site Supervision
Total Surface: 32'500sqm

Residential



Social Housing



Sperlonga 2013

Construction Cost: 7'600'000 €
Services Carried Out: Preliminary and Final Design,
Building Site Supervision
n. 44 apartments

Private Villa



Porto Rafael 2011

Construction Cost: 1'600'000 €

Services Carried Out: Interior Design, Consulting on
Materials on Custom Furniture, Lighting Design

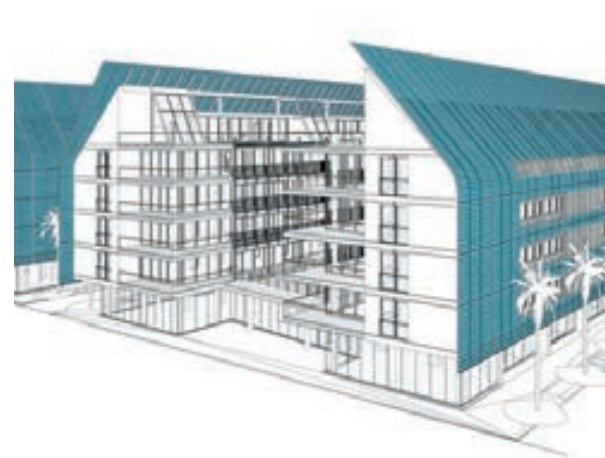
Total Surface: 650 sqm



Jardins Braço De Prata

Lisbon 2014

Arch. Design: Renzo Piano Building Workshop, Italy
Services Carried Out: Consulting and
Final Design of Facades
Total Surface: 36'000 sqm



Costa Smeralda SUB-B3



Palau 2009

Construction Cost: 13'000'000 €

Services Carried Out:

Final Design and Consulting on Materials

15'500 mc



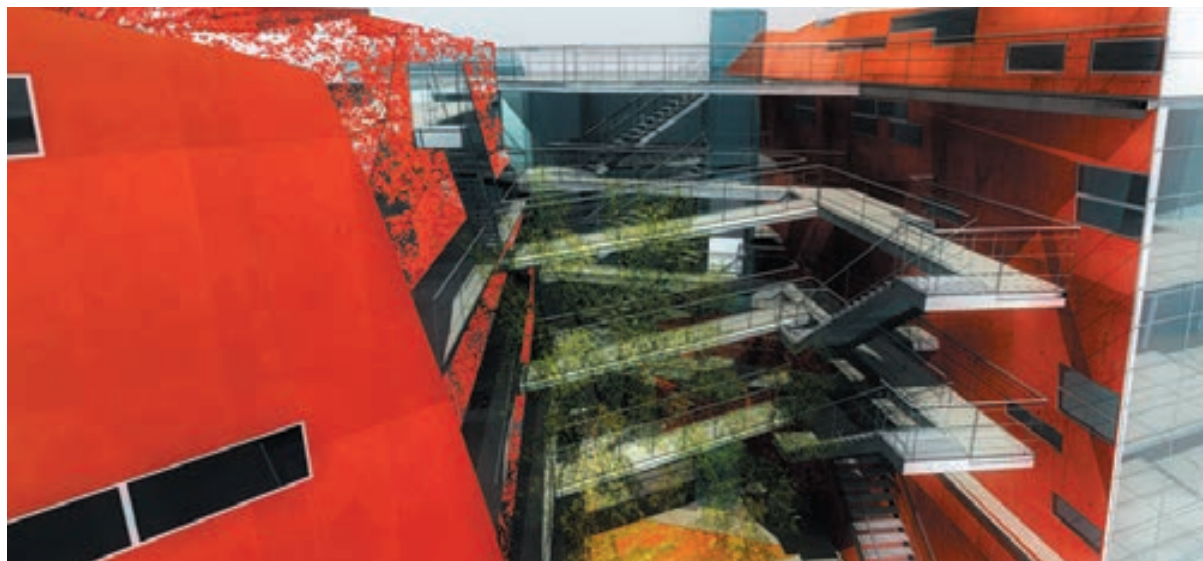
Alfiere EUR



Rome 2010

Arch. Design: Renzo Piano Building Workshop, Italy
Construction Cost: 29'000'000 €
Services Carried Out: Feasibility Study of Structures

Building H26 Novoli



Florence 2006

Architectural Design: Odile Decq ODBC, France
Structural Cost: 2'600'000 €
Services Carried Out: Consulting on FEM
Structural Model



Private Villa



Porto Rafael 2009

Construction Cost: 700'000 €

Services Carried Out: Final Design, Interior and
Outdoor Design

Total Surface: 2'250 sqm

Cecchignola Residential

Rome 2016
Services Carried Out: Preliminary and Final Design,
Building Site Supervision
Total Surface: 9'000 sqm
Apartments: n.120



Giustiniano Imperatore Residential



Rome 2019

Services Carried Out: Preliminary and Final Design,
Building Site Supervision
Total Surface: 1'750 sqm
n. 31 apartments

Santa Palomba Housing



Rome 2019
Services Carried Out: Preliminary and
Final Design
Total Surface: 76'000 sqm
n. 1'000 apartments



Public Building & Restoration



The Pantheon and its clone

for Ministry of Cultural Heritage - MIBAC



The Pantheon of Adrian is the most unequalled and preserved monument in the Roman world. Since the Renaissance it has stood out as the most important model of architecture, representing the highest evidence of the ancient building technique and an indispensable point of reference for the designing of all those buildings with a central plan.

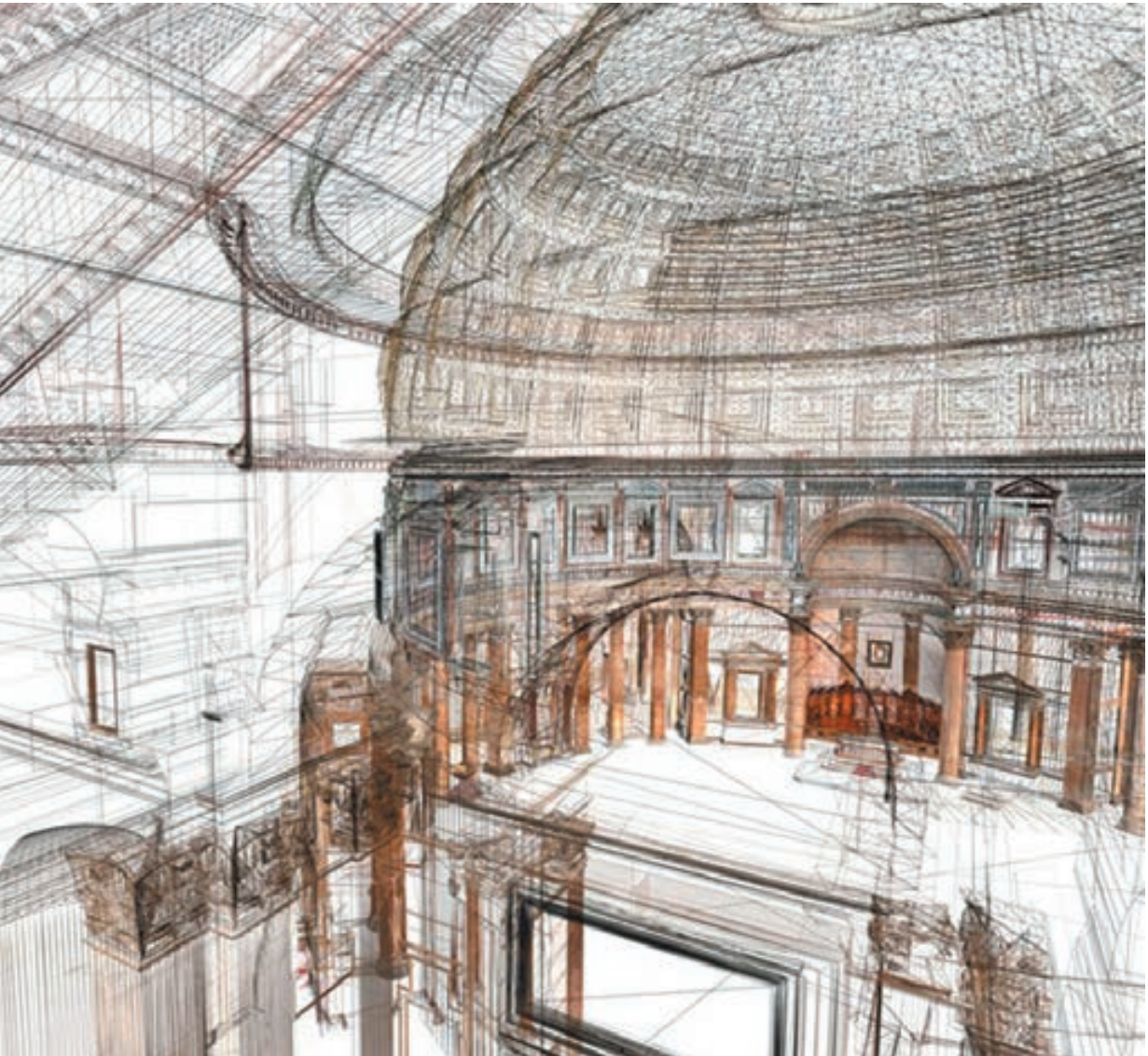
Techne partner has realized a three-dimensional model, through it, the archaeologist, the restorer and the tourist can admire the completeness of the Pantheon flying over it like a bird.

For the first time it has been possible to realize a dream.

Roma 2007

Services Carried Out:
Survey with GPS and Laser Scanner

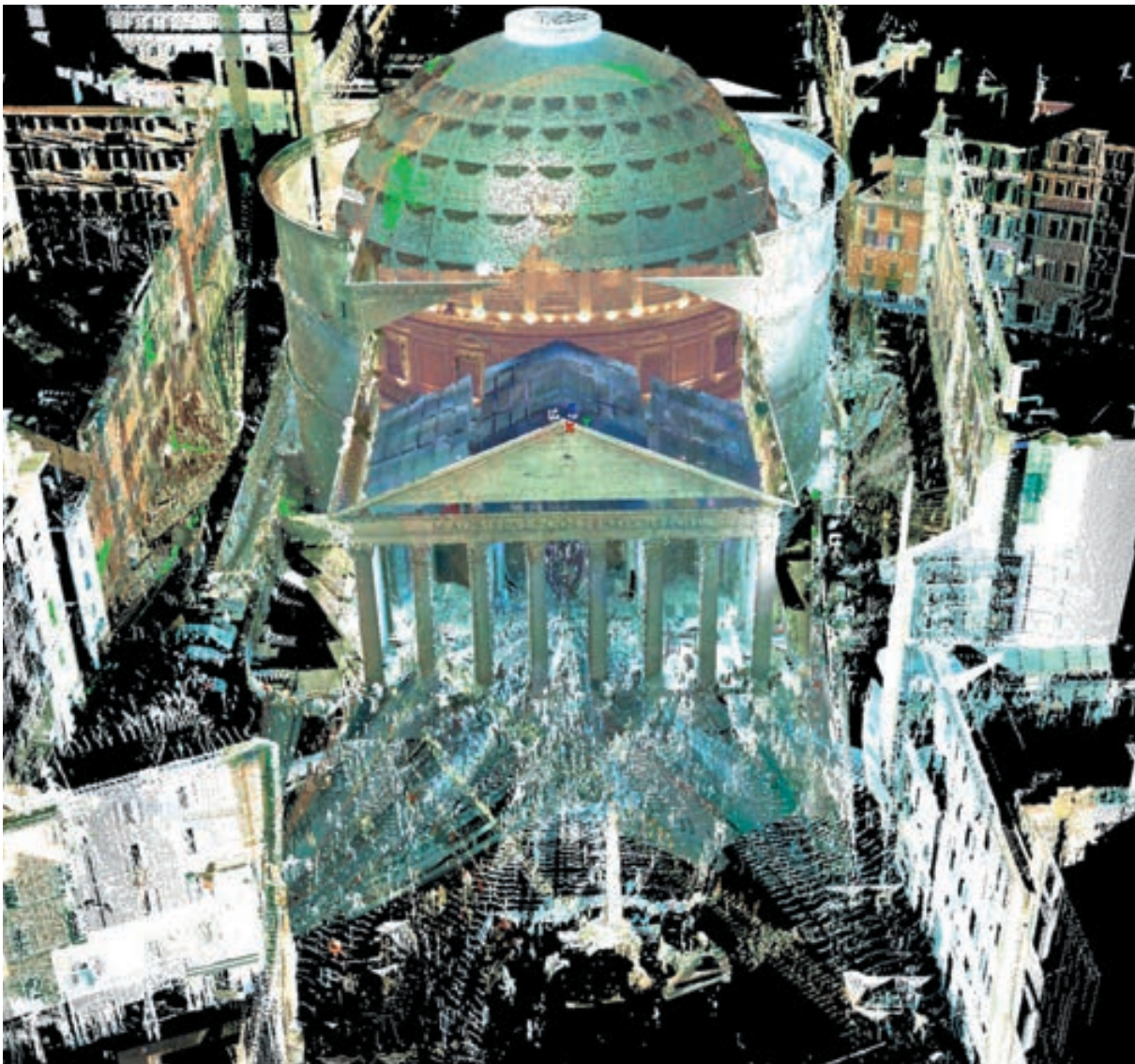




The Pantheon and its clone

New technologies applied to the cultural asset

Roma 2007
Services Carried Out:
Survey with GPS and Laser Scanner



The Pantheon and its clone

New technologies applied to the cultural asset

Roma 2007
Services Carried Out:
Survey with GPS and Laser Scanner





The Pantheon and its clone

New technologies applied to the cultural asset

Roma 2007
Services Carried Out:
Survey with GPS and Laser Scanner

Globe Theatre



Roma 2006

Construction Cost: 2'000'000 €
Services Carried Out: Final Design of
Structures and Site Supervision





Auditorium S.M. Assunta

Sperlonga 2014
Services Carried Out:
C.S.E. and Site Supervision

Tower Truglia



Sperlonga 2008

Services Carried Out:

Preliminary and Final Design, Site Supervision



Museum San Domenico



Fondi 2009

Construction Cost: 2'300'000 €
Services Carried Out: Preliminary and Final
Design, Building Site Supervision

Santi Erasmo e Marciano Cathedral



Gaeta 2011
Construction Cost: 13'115'000 €
Services Carried Out: Preliminary and Final Design

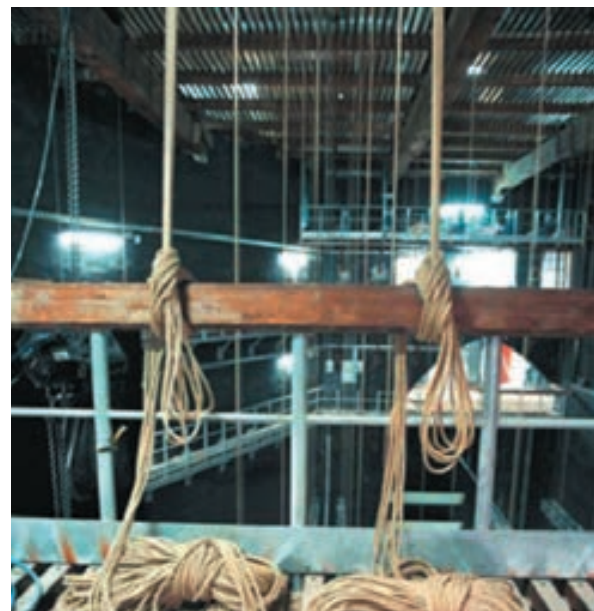


Archibishop's Palace



Gaeta 2014
Services Carried Out:
Preliminary and Final Design, Site Supervision

Goldoni Theatre



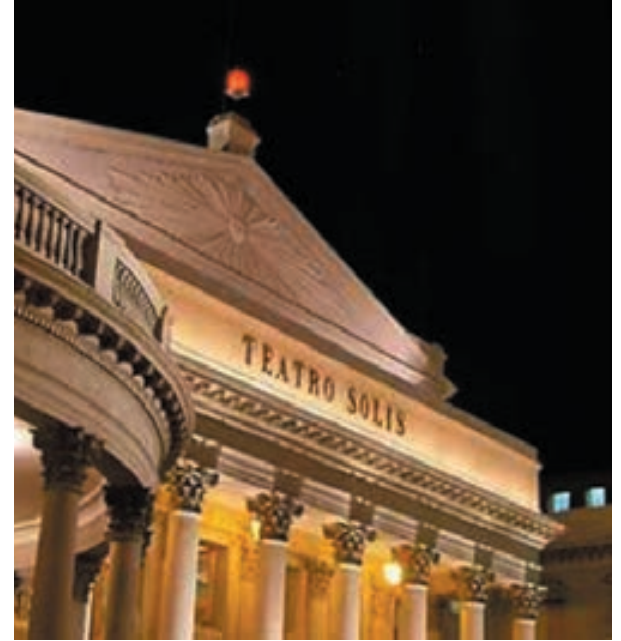
Livorno 2002

Structural Cost: 2'500'000 €

Services Carried Out: Preliminary and Final Design of Structures, Structures Supervision, Fire Engineering



Theatre Solis



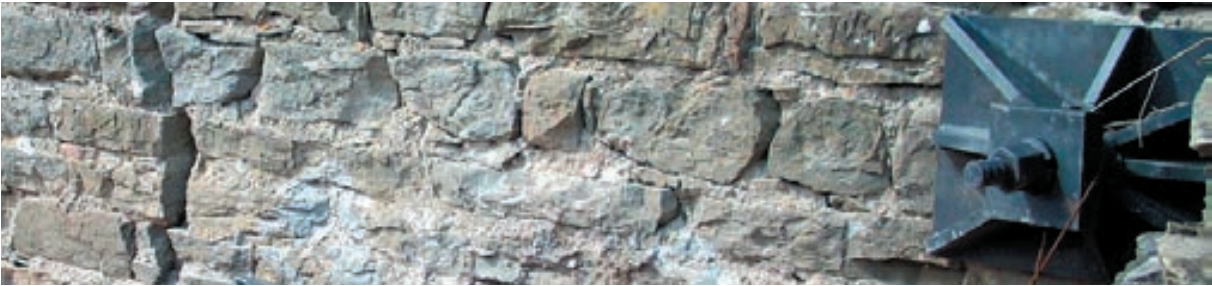
Montevideo 2004

Construction Cost: 36'000'000 US\$

Structural Cost: 7'100'000 US\$

Services Carried Out: Preliminary and Final Design
of Structures

Cerbaia Castle



Cantagallo 2018
Services Carried Out:
Preliminary and Final Design, Site Supervision



Riiefs of Monumental Archaeological

Ancient city of Crustumerium / Roma

Roman Forum / Roma

Tomb of the Emperor Nero / Roma

Lapis Niger / Roma

Hypogean Mausoleum / Roma

Rocca Bruna Tower / Roma

Housing structure of the imperial era / Roma

Archeological finds in Via della Cecchignola / Roma

Cathedral / Gaeta

Roman galleries / Ponza

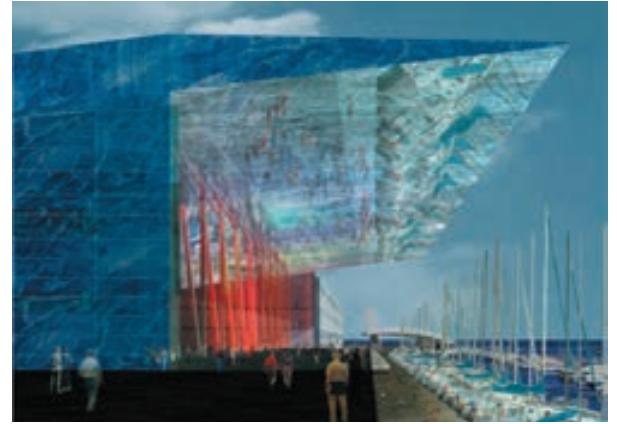
Etruscan Furnace / Firenze

Roma - Gaeta - Ponza - Firenze
2005 - 2019
Laser Scanner - 3D survey

Special Architecture



Trade Show Padiglione B



Genoa 2007
Services Carried Out: Fire Engineering of Steel
Structures

City Life Torre C



Milan 2008

Services Carried Out: Feasibility Study of Structures



ENI new headquarter



Milan 2013

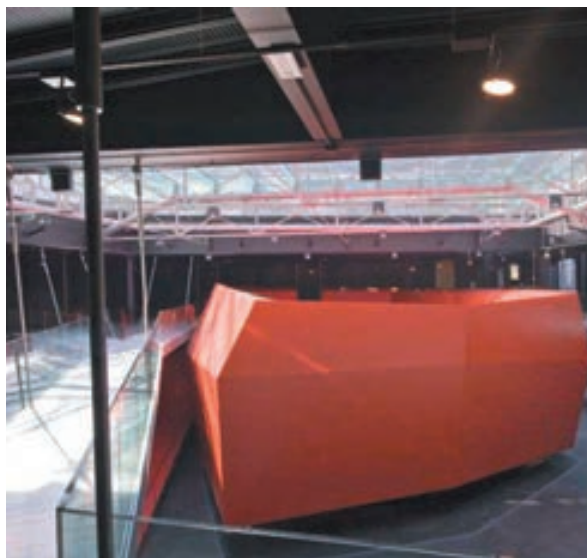
Architectural Design: Morphosis Architects, USA

Total Ammount of Cost: 138'000'000 €

Structural Cost: 22'000'000 €

Services Carried Out: Preliminary and Final Design of
Structures (partnership)

MACRO Modern Art Gallery

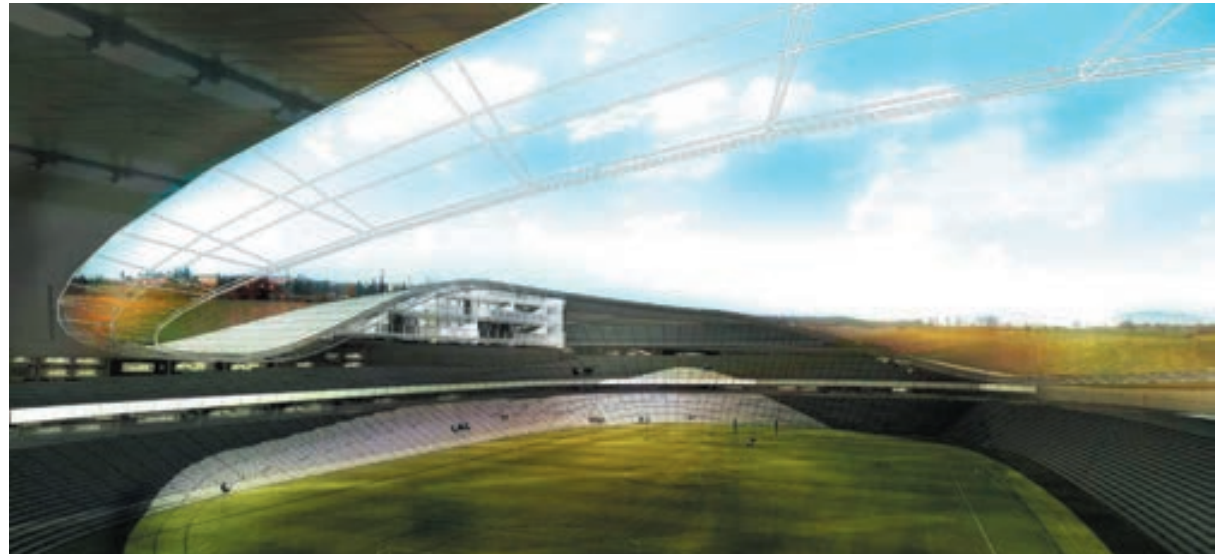


Rome 2002

Architectural Design: Odile Decq ODBC, France
Construction Cost: 15'500'000 €
Structural Cost: 7'750'000 €
Services Carried Out: Final Design of Structures



Municipal Stadium



Borgo Vecchio 2003

Architectural Design: Odile Decq ODBC, France
Services Carried Out: Preliminary Design of
Structures (Design Competition)
Seatings: 22'000

Kaplasky Unconventional Skyscrapers

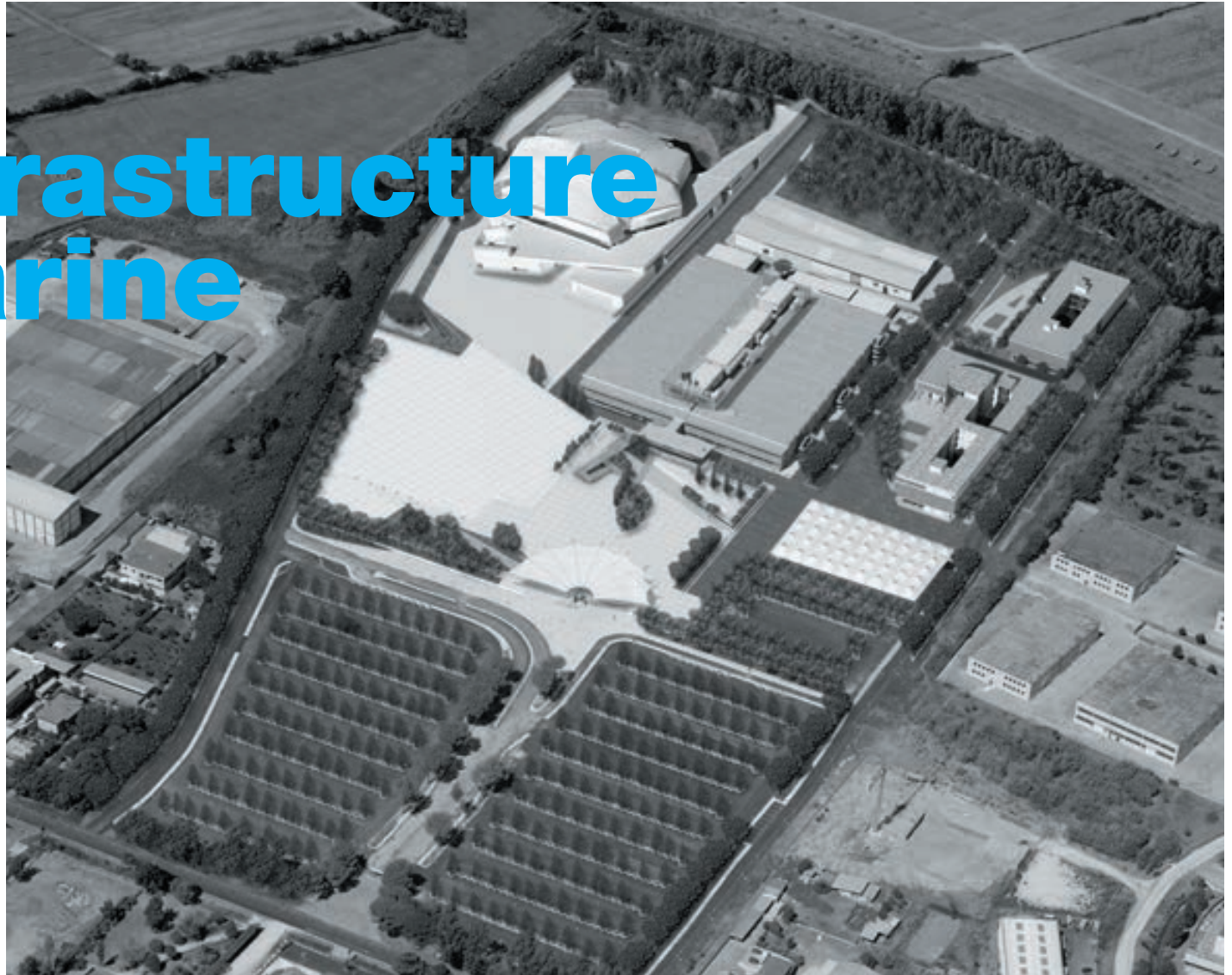
E-volo Competition 2014

Services Carried Out: International Competition,
Preliminary Design

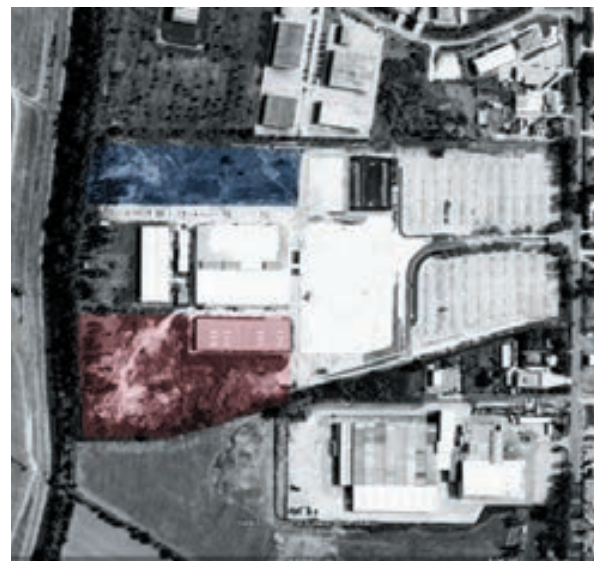
Total Surface: 12'000 sqm



Infrastructure Marine

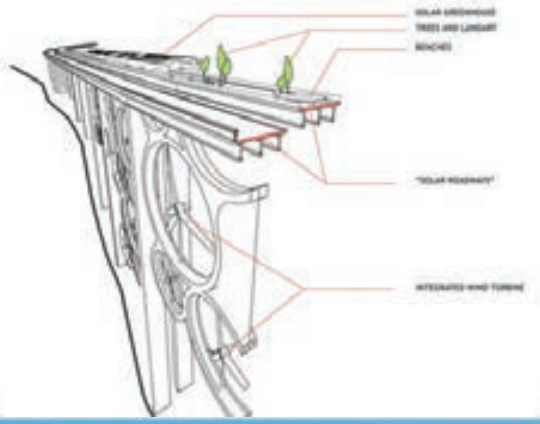


Ex factory Rossi Sud



Latina 2014
 Construction Cost: 5'840'000 €
 Services Carried Out: Preliminary and
 Final Design, Building Site Supervision
 Total Surface: 180'000 sqm





Solar Wind Project Costa Viola Viaduct

Green Good Design Award 2014
 World Infrastructure Award 2013
 Well Tech Smart City Award 2013

Reggio Calabria 2011
 Construction Cost: 40'000'000 €
 Total Surface: 1 Km
 Energy Produced: 22'500 MWh/year

Multilevel Park & Belvedere San Leone



Sperlonga 2008
Construction Cost: 2'570'000 €
Services Carried Out: Preliminary and
Final Design, Building Site Supervision





New Marina La Bellana

Leghorn 2013

Construction Cost: 80'000'000 €

Services Carried Out: Preliminary Design

Total boat moorings: 1'250

Total Surface: 345'000 sqm

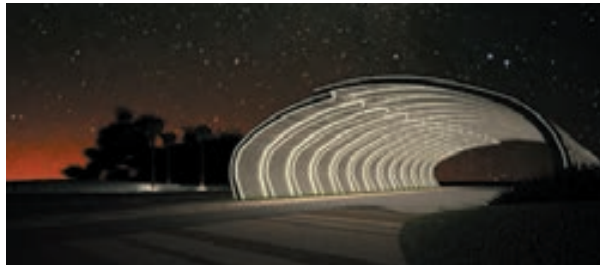
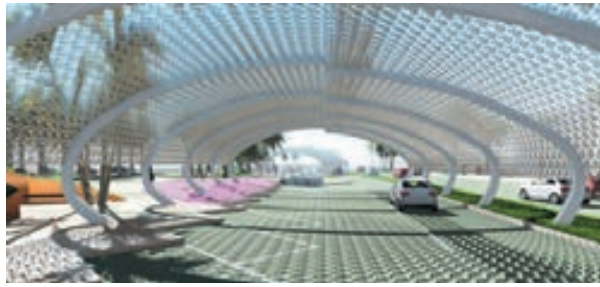
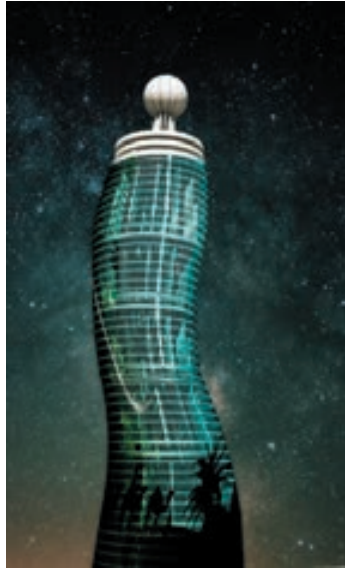
Marina



Sperlonga 2012
 Construction Cost: 3'500'000 €
 Services Carried Out: Preliminary and
 Final Design, Building Site Supervision



The Ring Road



Unaizha 2015

Construction Cost: 26'850'000 €
Services Carried Out: Preliminary Design
and Final Design
Total Surface: 121'500 sqm

Urban Plan & Landscaping



Urban Plan Cecchignola



Rome 2017

Services Carried Out: Preliminary and
Final Design, Building Site Supervision
Total Surface: 29 acres

Compound Mobility Plan



Monte San Biagio - Fondi - Sperlonga
2014
Services Carried Out: Master Plan
Total Km of Viability: 153,50





Integrated Plan Magliana GRA

Rome 2019
Services Carried Out:
Masterplan and EIA
Total Surface: 1'270'366 sqm



The Challenges of Development of the Central Region

Unaizah 2014
Services Carried Out: Masterplan



Science City Flaminio Masterplan



Rome 2015

Construction Cost: 90'000'000 €

Services Carried Out: Preliminary Design

Total Surface: 75'000 sqm

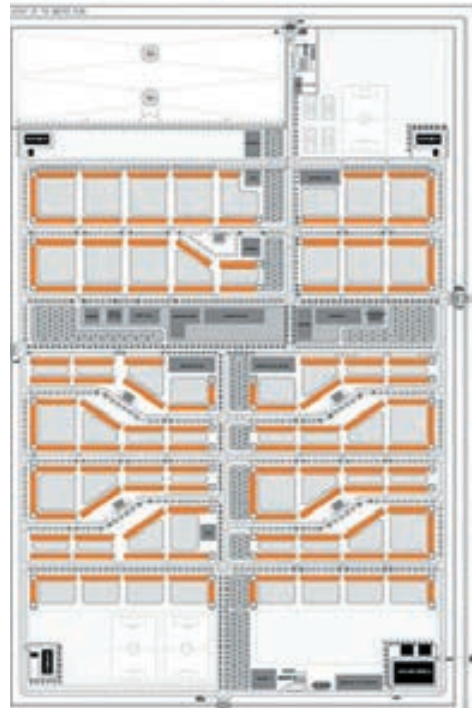
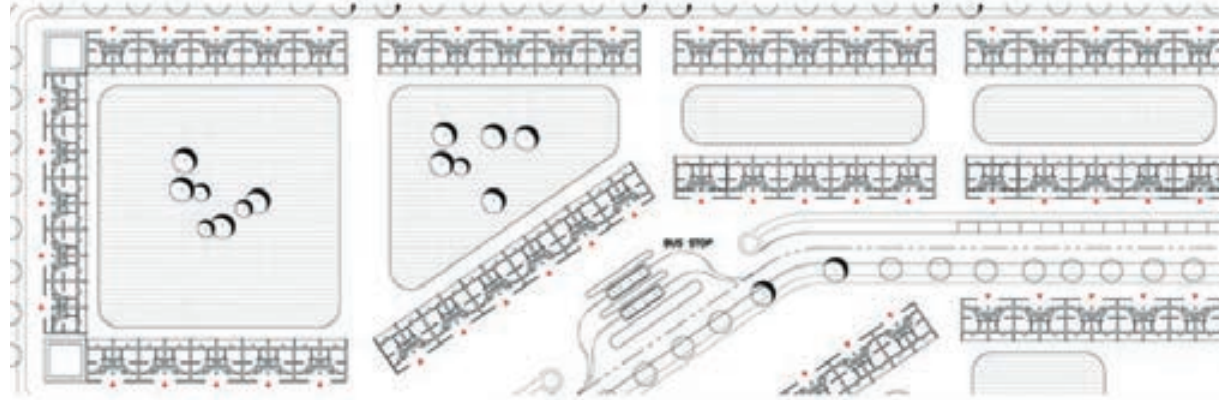
Constantine
New Masterplan
International Competition 2011
honorable mention



Constantine 2011
Construction Cost: 70'000'000 €
Total Surface: 10'000 new inhabitants



West Qurna Accommodation camp



West Qurna 2012

Construction Cost: 30'000'000 €

Services Carried Out: Masterplan, Preliminary Design

Total Surface: 3'000 new inhabitants

Casal Grottoni Compound



Rome 2012

Construction Cost: 119'372'000 €

Services Carried Out:

Preliminary and Final Design

Total Surface: 132'637 sqm





Rewetland Life +8

Best 8 "Best of the Best" LIFE

Environment Projects 2014

Latina 2014
Services Carried Out: Masterplan

PROGETTAZIONE INTEGRATA E PIANIFICAZIONE URBANISTICA



Via C. Colombo n. 18 - 04022 Fondi (Latina) - Italy
www.technestudio.eu

partner

SINTESI - PDM GHEOS srl

Via Paolo Monelli - Roma
www.sintesisrl.it

PRIMA STUDIO ASSOCIATO DI INGEGNERIA

Via G. Civinini - Livorno
www.primaingegneria.it

ANTONETTI ARCHITECTS

Viale degli Ammiragli - Roma
www.archilovers.com/pier-giorgio-antonetti

SIS STUDIO DI INGEGNERIA DELLE STRUTTURE

Via Borra - Livorno
www.sis-ingegneria.com

ESSENCE INTERIORS

Via dei Rutuli - Aprilia
www.essenceinteriors.it

URSUS COMMUNICATION

Via Alessandria - Roma
www.ursuscommunication.it

All images are copyrighted material and all rights are reserved